

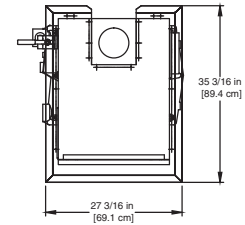
CODE OPTIONS

CSD-1	UTC Lockout/Reset Control Manual Reset LWCO
Kentucky (Water Htr Only)	200°F Maximum Operating Control and High Limit

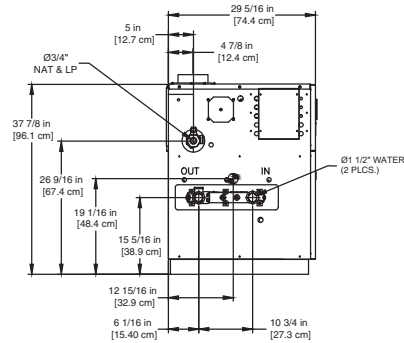
NOTE: Dimensions are approximate and should not be used to "rough-in" equipment.

* Add circulator amps.

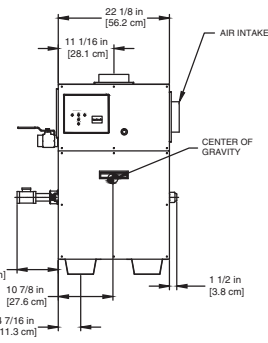
**For incoming gas pressures lower than 6" WC natural or 11" WC propane, consult factory.



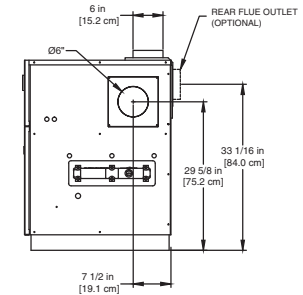
OUTDOOR TOP PANEL



LEFT SIDE



FRONT



RIGHT SIDE

RSUB-14-E

AGA CERTIFIED RATINGS & CAPACITIES

Fuel Type	Natural/Propane Gas	Boiler FLA	3.8*
Input BTU/hr.	225,000 / 66 kW	Min. Gas Pressure Required	6" WC**
Output BTU/hr.	186,750 / 55 kW	Max. Gas Pressure Allowed	14" WC
Electrical Requirements	120VAC/ 1 ph/ 60 Hz/ 6 amp	Operating Weight	365 lbs. / 166 kg.

TEMPERATURE RISE / PRESSURE DROP

15°F / 8.3°C			
Flow Rate		Pressure Drop	
GPM	L/s	Ft	kPa
24.6	1.6	0.18	0.5

BOILER TRIM & CONTROLS

Main Gas Valve	Honeywell VR8305Q 3/4"	Pilot Valve	Honeywell VR8205Q
Firing Valve	Honeywell B200T1025 3/4"	Air Switch	Cleveland RSS-495
Ignition Control	UTC 1003-61A	Blower Motor	1/5 hp - FLA 3.0
Operating Control (LB/LW)	BTC-OR	Relief Valve - LW	3/4" x 3/4" set @ 125 psi
High Limit (LB/LW)	Jumo	Relief Valve - LB	3/4" x 3/4" set @ 50 psi
		Flow Switch	TACO IFS-1

RECOVERY CAPACITY

40°F	22°C	60°F	33°C	80°F	44°C	100°F	56°C	120°F	67°C	140°F	78°C
560	2122	374	1414	280	1061	224	849	187	707	160	606

ASME

ASME Sect IV Htg Surface	30.5 Sq. Ft. / 2.83 Sq. M.	Design Data	Max. 160 psig & 250°F
Water Volume	1.26 gal / 4.8 l (liters)		

REP FIRM _____
 SUBMITTED BY _____
 JOB NAME _____
 ARCHITECT _____
 ENGINEER _____
 CONTRACTOR _____
 DATE _____

LCD 225

Category I or Category III Appliance
 (See Installation and Operation Manual for venting information)

RBI® A Division of Mestek, Inc.
 Westfield, MA 01085
 (413) 568-9571